

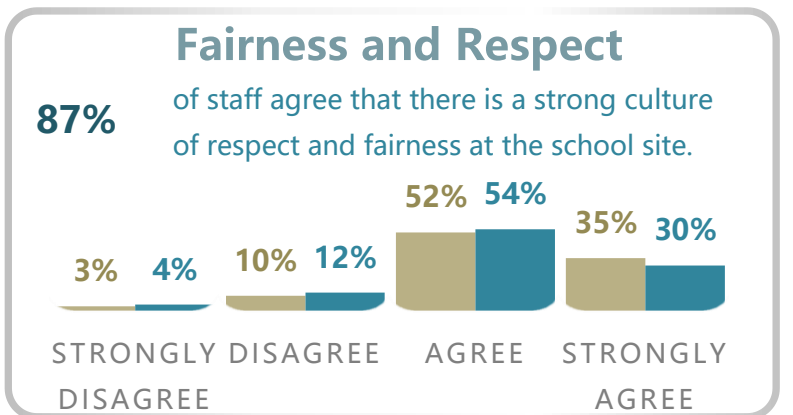
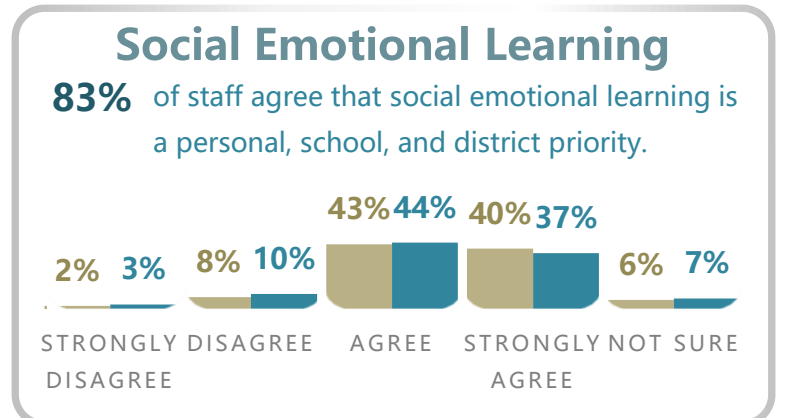
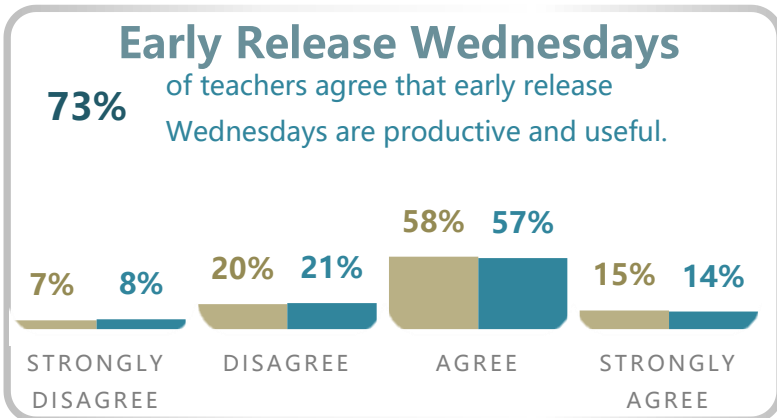
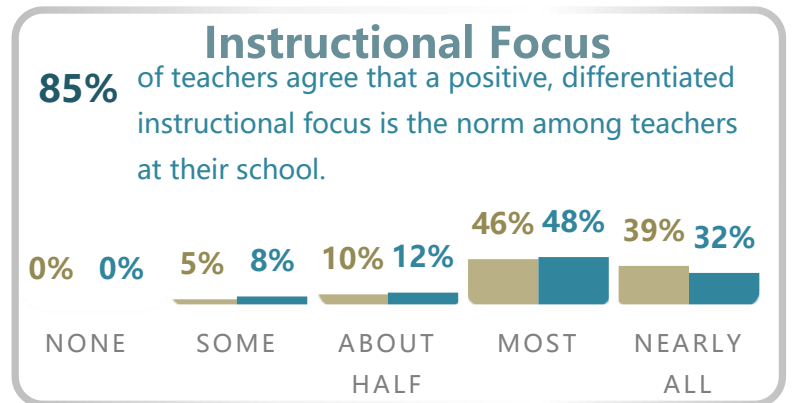
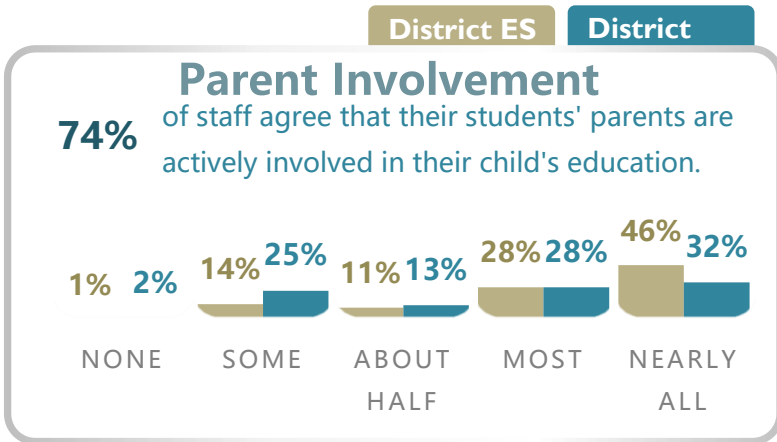
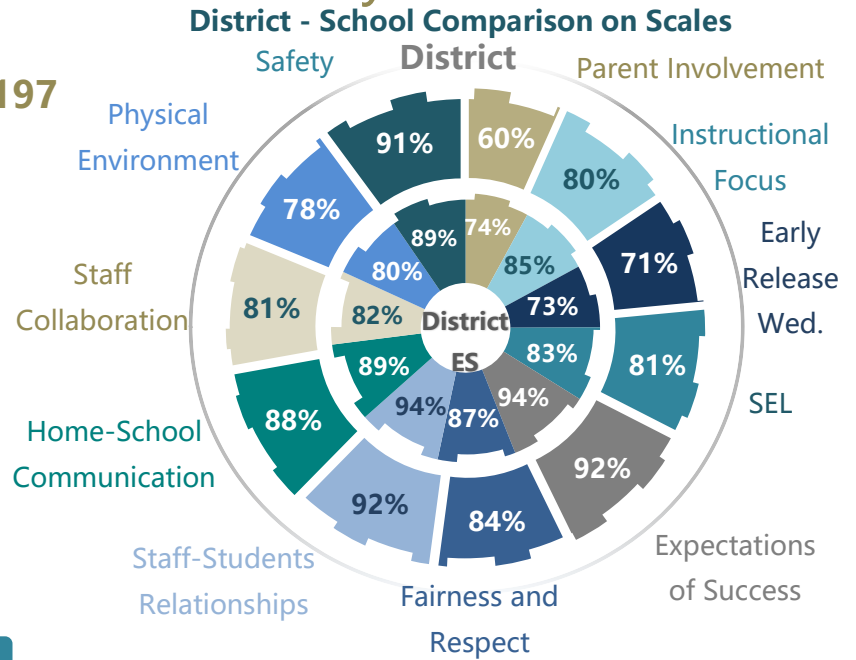
Washoe County School District - Elementary



Number of Surveys Returned 2197

The charts on this page display the % of staff who marked each response option across all questions in a scale. The caption above each chart represents the percentage of "Agree"/"Strongly Agree" or "Most"/"Nearly All" responses across all items in a scale.* The tables on the next pages display the results of all survey questions and which items are included in each scale.

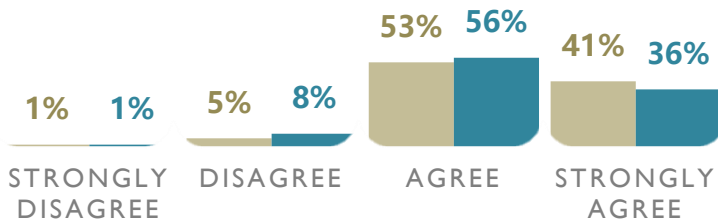
*Excludes "Don't Know" & "N/A" from totals



Numbers may not add up to 100% due to rounding

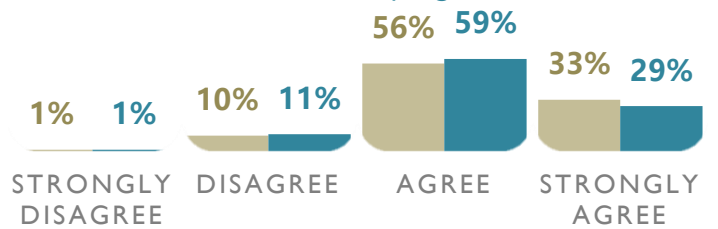
Staff-Student Relationships

94% of staff agree that staff at their school care about every student.



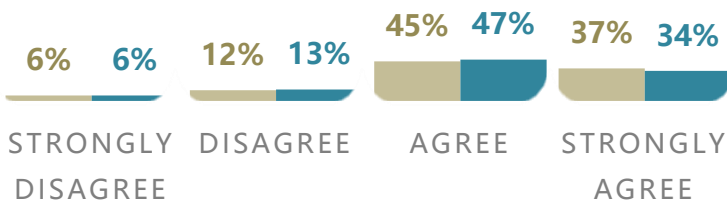
Home-School Communication

89% of teachers agree that the school does a good job communicating with parents about school activities and student progress.



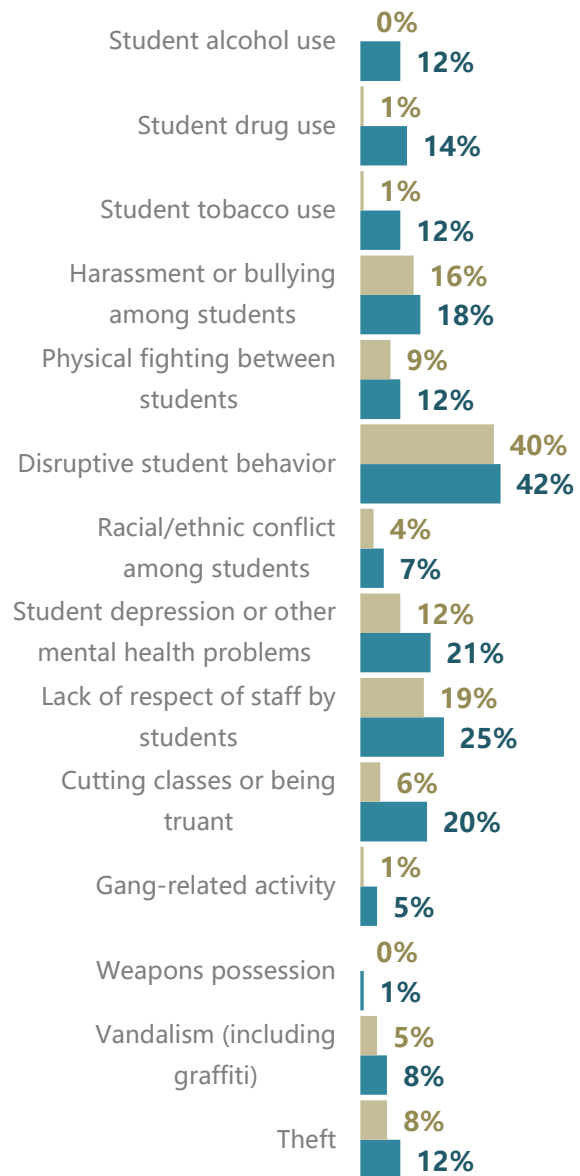
Staff Collaboration

82% of staff agree that there is a positive sense of collaboration among school leadership and school staff.



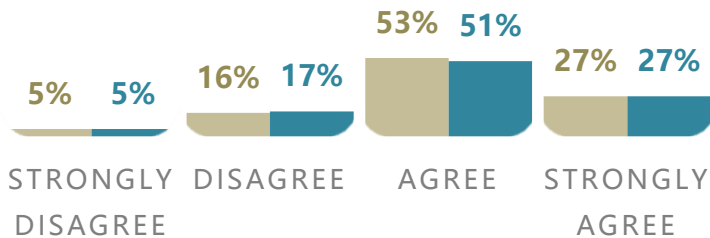
How common are the following behaviors at this school?

Percent reporting "Moderately" or "Very Common"



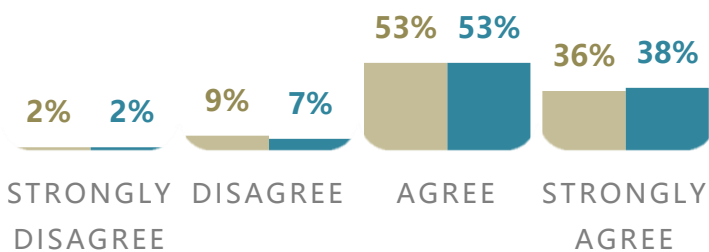
Physical Environment

80% of staff agree that their school is clean and well-maintained.



Perception of Safety

89% of staff agree that their school is safe.



Teacher and Staff Climate Individual Items

The tables below show the percentage of staff in your school who provided a response to each question on the survey across response categories.

Table 1. Parent Involvement (Teachers Only)

	None	Some	About Half	Most	Nearly All
1a. How many of your students' parents/guardians attended parent-teacher conferences when you requested them?	0%	4%	4%	21%	71%
1b. How many of your students' parents/guardians support your teaching efforts?	1%	9%	10%	42%	39%
1c. How many of your students' parents/guardians have asked you about ways they can support their child's learning at home?	3%	42%	24%	22%	9%
1d. How many of your students' parents/guardians know how well their child is doing in your class?	0%	13%	14%	40%	34%
1e. How many of your students' parents have you met?	0%	4%	3%	15%	78%

Table 2. Work Related Stress (Teachers Only)

	Strongly Disagree	Disagree	Agree	Strongly Agree
2a. I feel tense, restless, or anxious at work.	25%	37%	27%	11%
2b. I feel burnt out.	17%	35%	33%	16%
2c. With this work pace I don't think I'll make it to the retiring age.	20%	36%	28%	16%
2d. I'm disappointed in our teacher community's ways of handling our shared affairs.	23%	51%	21%	6%
2e. In spite of several efforts to develop the working habits of our teacher community they haven't really changed.	20%	51%	24%	6%
2f. I often feel like an outsider in my work community.	39%	46%	11%	5%
2g. The challenging pupils make me question my abilities as a teacher.	27%	45%	20%	7%
2h. I often feel I have failed in my work with pupils.	35%	51%	11%	3%
2i. Dealing with problem situations considering my pupils often upsets me.	20%	46%	30%	5%

Table 3. Instructional Focus (Teachers Only)

How many teachers in this school...	None	Some	About Half	Most	Nearly All
3a. Emphasize teaching lessons in ways that are relevant to students.	0%	3%	5%	46%	46%
3b. Focus instruction on learning, not just remembering facts.	0%	2%	6%	44%	48%
3c. Take responsibility for ensuring that all students master grade level objectives.	0%	3%	7%	49%	41%
3d. Effectively differentiate instruction to meet the needs of students at all achievement levels.	0%	5%	13%	51%	31%
3e. Take responsibility for ensuring that the needs of students with special instructional requirements are addressed.	0%	5%	11%	48%	36%
3f. Communicate with each other to make student learning consistent across classes within the same grade level.	0%	7%	11%	43%	39%
3g. Communicate with each other to make student learning consistent across grade levels.	1%	12%	15%	40%	32%

Table 4. Use of Early Release Wednesdays (Teachers Only)

	How are you using the time?	What is the most useful?
4a. Grade-Level Meetings	86%	79%
4b. Department Meetings	13%	6%
4c. Collaboration Within Disciplines	21%	13%
4d. Committee Meetings	7%	2%
4e. School-Wide Meetings	77%	27%

	How are you using the time?	What is the most useful?
4f. Mentor Meetings	4%	3%
4g. Independent Work/Preparation Time	23%	31%
4h. Trainings from Central Office	48%	6%
4i. Other	9%	5%

Table 5. Early Release Wednesdays (Teachers Only)

	Strongly Disagree	Disagree	Agree	Strongly Agree
5a. I am satisfied with the amount of time provided on early release Wednesdays.	8%	19%	62%	12%
5b. The time provided for early release Wednesdays is used productively.	7%	21%	52%	19%
5c. I apply the knowledge that I gain from participation in early release Wednesdays in my classroom practice.	5%	17%	61%	16%
5d. The discussion focus of early release Wednesdays is consistent over time.	6%	23%	57%	14%

Table 6. Social and Emotional Learning Curriculum

	Yes, in all grade levels	Yes, in some grade levels	No, not for any grade level	Not Sure	
6a. Does your school follow an established written social and emotional learning curriculum?	51%	17%	15%	17%	
	Strongly Disagree	Disagree	Agree	Strongly Agree	Not Sure
6b. I feel confident in my ability to implement the social and emotional learning curriculum that has been adopted at my school.	7%	10%	41%	27%	14%

Table 7. Social and Emotional Learning Support

	Strongly Disagree	Disagree	Agree	Strongly Agree	Not Sure
7a. The adults in this school interact with one another in a way that models social and emotional competence.	3%	9%	47%	39%	2%
7b. The adults in this school are expected to actively promote students' social and emotional development.	1%	3%	42%	50%	3%
7c. All staff are expected to address students' social and emotional needs.	1%	4%	42%	49%	4%
7d. The adults in this school interact with students in a way that supports students' social and emotional skills.	1%	6%	48%	42%	3%
7e. The culture at my school supports social and emotional learning.	2%	8%	42%	43%	4%
7f. The culture in the district supports the development of students' social and emotional skills.	4%	11%	48%	27%	10%
7g. My school has developed a vision for academic, social, and emotional learning.	2%	11%	38%	38%	11%
7h. The vision for academic, social and emotional learning has been communicated to all school staff.	4%	15%	37%	34%	10%

Table 8. Expectations of Success

	Strongly Disagree	Disagree	Agree	Strongly Agree
8a. Staff at my school set high expectations for students' achievement.	1%	4%	52%	44%
8b. Staff at my school do not allow students to give up in class.	1%	7%	56%	35%
8c. Staff at my school work hard to motivate students who show low interest in school work.	1%	5%	55%	38%
8d. Staff at my school work hard to make sure that students stay in school.	1%	3%	52%	45%

Table 9. Fairness and Respect

	Strongly Disagree	Disagree	Agree	Strongly Agree
9a. Staff respect all students at my school.	1%	7%	54%	38%
9b. Staff are professional when speaking of each other and/or administrators.	4%	12%	52%	31%
9c. Students of different social backgrounds get along well at my school.	1%	6%	60%	33%
9d. The rules and expectations about how students should behave at my school are fair.	2%	6%	48%	44%
9e. The rules and expectations about student behavior are enforced equally by staff.	7%	18%	48%	27%

Table 10. Staff-Student Relationships

	Strongly Disagree	Disagree	Agree	Strongly Agree
10a. Teachers and staff at my school care about every student.	0%	4%	51%	44%
10b. Teachers and staff at my school listen to students' ideas and opinions.	0%	5%	60%	35%
10c. Teachers and staff at my school talk openly to students about school issues.	1%	9%	58%	32%
10d. Every single student at our school knows at least one staff member who would help them with a personal problem.	0%	4%	48%	47%
10e. Every single student at our school knows at least one staff member who would care if they were not in school.	0%	5%	49%	46%

Table 11. Home-School Communication and Relationships

	Strongly Disagree	Disagree	Agree	Strongly Agree
11a. Staff at my school believe that parents are partners in the educational process.	1%	6%	50%	43%
11b. My school is welcoming to parents.	1%	4%	46%	49%
11c. When staff at my school contact parents, it is usually to discuss problems with their child's behavior or academic progress.	2%	27%	58%	13%
11d. Staff at my school are expected to provide parents with ways to support their child's learning at home.	0%	6%	63%	31%
11e. Staff at my school frequently update parents/guardians about their child's progress in their classrooms.	1%	6%	63%	30%

Table 12. Staff Collaboration

	Strongly Disagree	Disagree	Agree	Strongly Agree
12a. There is a sense of teamwork among all school staff.	4%	15%	48%	32%
12b. The school leadership makes a sustained effort to address staff concerns.	7%	13%	43%	37%
12c. Staff at my school are recognized and appreciated for good work.	5%	13%	47%	35%
12d. The school leadership makes sure that staff are involved in making plans and decisions that affect this school.	6%	14%	45%	34%
12e. The school leadership makes sure that my administrative duties do not interfere with my essential role of educating students.	6%	14%	50%	30%
12f. I feel comfortable raising issues and concerns that are important to me at my school.	9%	13%	43%	35%
12g. I feel supported by my administrator.	7%	9%	35%	49%
12h. My school provides me with the materials and resources needed to provide support for students of all abilities.	6%	15%	50%	30%
12i. I feel school leadership is clear about what my job is at this school.	4%	9%	46%	41%
12j. Staff are proud to work at this school.	3%	9%	45%	43%
12k. I look forward to coming to this school every day.	4%	10%	47%	39%

Table 13. Physical Environment

	Strongly Disagree	Disagree	Agree	Strongly Agree
13a. My school building is clean.	3%	9%	50%	38%
13b. The temperature in my school is comfortable all year round.	6%	21%	50%	24%
13c. The bathrooms in my school are clean.	3%	11%	54%	32%
*13d. A lot of equipment at my school is broken or outdated.	15%	54%	24%	7%
*13e. Vandalism of school property is a problem at my school.	27%	55%	14%	4%

*Items were reverse-coded to build the "Physical Environment" scale score.

Table 14. Perception of Safety

	Strongly Disagree	Disagree	Agree	Strongly Agree
14a. I feel safe inside my school.	1%	3%	54%	42%
14b. I feel safe outside around my school.	2%	8%	55%	36%
14c. I feel safe leaving my school even when I am there late or on the weekends.	4%	16%	51%	30%

Table 15. Student Behaviors

How common are the following behaviors at this school?

	Not at All Common	Somewhat Common	Moderately Common	Very Common
15a. student alcohol use	97%	3%	0%	0%
15b. student drug use	95%	4%	1%	0%
15c. student tobacco use	96%	4%	1%	0%
15d. harassment or bullying among students	36%	49%	12%	4%
15e. physical fighting between students	58%	33%	7%	2%
15f. disruptive student behavior	17%	43%	23%	17%
15g. racial/ethnic conflict among students	76%	20%	3%	1%
15h. student depression or other mental health problems	51%	37%	9%	3%
15i. lack of respect of staff by students	47%	34%	11%	8%
15j. cutting classes or being truant	77%	17%	4%	2%
15k. gang-related activity	92%	7%	1%	0%
15l. weapons possession	94%	5%	0%	0%
15m. vandalism (including graffiti)	80%	15%	4%	1%
15n. theft	64%	28%	6%	2%

Table 16. Safety Knowledge

	TRUE	FALSE	Don't Know
16a. My school promotes Secret Witness.	38%	13%	48%
16b. I know the locations of fire extinguishers in my school.	77%	14%	9%
16c. I know how to use a fire extinguisher.	75%	18%	7%
16d. I know the locations of the emergency exits at my school.	97%	2%	1%
16e. I know the lockdown procedures for code red and yellow at my school.	97%	2%	1%
16f. In the event of an emergency on school grounds I know what to do.	95%	4%	2%
16g. My school communicates with parents throughout the year about what they should do in the event of a school emergency.	45%	13%	42%
16h. My school communicates with students throughout the year about what they should do in the event of a school emergency.	83%	7%	10%
16i. My school has a school safety planning team.	63%	6%	31%
16j. Students are trained to be on the lookout for anything out of the ordinary (people, behavior, containers, broken air vents, vehicles, etc.).	49%	23%	28%
16k. Students are represented on the school safety planning team.	11%	26%	64%
16l. Parents are represented on the school safety planning team.	16%	17%	66%